

**The terminal server** - Can be accessed from any Windows 98, 2000, XP or MacOS X workstation in the world

### Remote Desktop Client

Found on windows machines under:

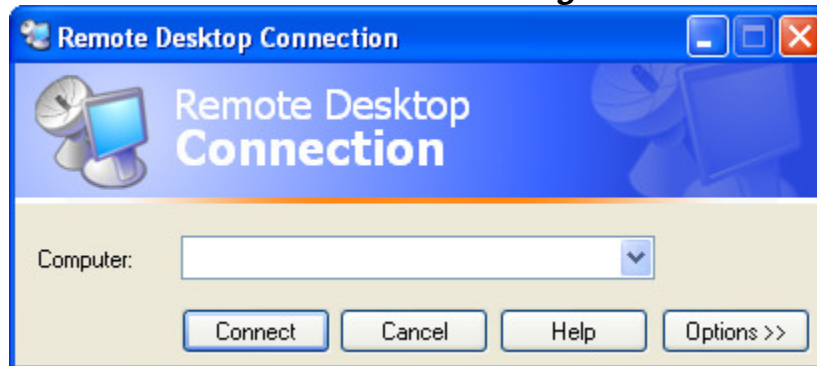
- Start – All Programs – Accessories – Communication – *Remote Desktop Connection*

Found on an OS X system at:

- <http://www.microsoft.com/mac/>
  - Remote desktop client

When it ask for a computer type in

- ***Terminal.whancock.org*** - for Britt Users
- ***Terminalk.whancock.org*** - for Kanawha Users



- You will be asked for username and a password
  - **Username – wh\username**
  - **Password – your password**
- You will then be in the Terminal Server
- Logoff when done to return your screen